

ANSI FLANGES AND FITTINGS

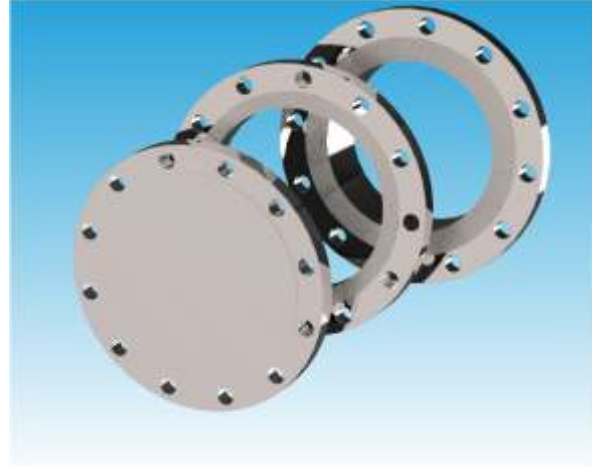
ANSI Flanges general specification.

Features

Suitable for high pressure or high vacuum.
 Seal made by Viton® gasket.
 Stainless steel grade 304,304L,316,316L

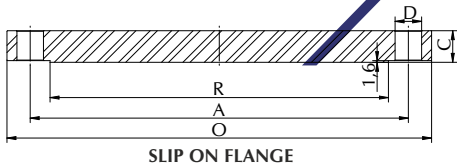
Specifications

Flanges SS304,304L,316,316L
 Bolts SS Hexagonal socket

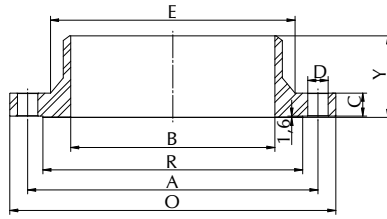


Nom Size	Threads Per inch	Recommended hole diameter		Tapping information		Drill size	Recommended torque(inch-lbs.) alloy steel
		Max.	Min.	Max.	Min.		
1/16	27	.2374	.2334	.375	.250	15/64	150
1/8	27	.3271	.3271	.375	.250	21/64	250
1/4	18	.4249	.4209	.521	.397	27/64	600
3/8	18	.5655	.5615	.516	.392	9/16	1200
1/2	14	.6905	.6865	.641	.517	11/16	1800
3/4	14	.8836	.8896	.627	.503	57/64	3000
1	11 1/2	1.280	1.1240	.772	.584	1 1/8	4200
1 1/4	11 1/2	1.4794	1.4754	.780	.592	37.5mm	5400
1 1/2	11 1/2	1.7165	1.7116	.793	.605	43.5mm	6900
2	11 1/2	2.1905	2.8165	.761	.573	2 3/16	8500

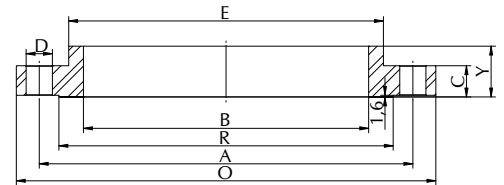
ANSI Flanges of class 150 as per ANSI - B16.5



SLIP ON FLANGE



WELDNECK FLANGE

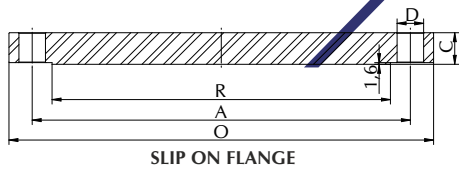


BLIND FLANGE

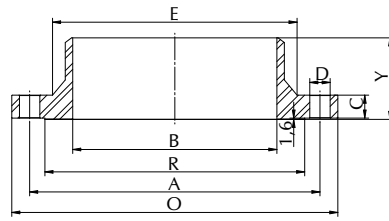
Nominal pipe size MM (INCH)	Flange O/D Ø O	Bolt circle Ø A	Bolts hole size Ø D	No. of holes	Thk.of Flange C	Hub.dia Ø E	Hub length		Bore Ø S/O&S/W B	R/F Ø R
							S/O&S/W Y	W/N Y		
15 (1/2")	88.9 (3.5)	60.3 (2.37)	15.9 (0.625)	4	11.1 (0.44)	30.2 (1.19)	15.9 (0.625)	47.6 (1.88)	22.3 (0.88)	34.9 (1.38)
20 (3/4")	98.4 (3.88)	69.8 (2.75)	15.9 (0.625)	4	12.7 (0.5)	38.1 (1.5)	15.9 (0.625)	52.4 (2.06)	27.7 (1.09)	42.9 (1.69)
25 (1")	107.9 (4.25)	79.4 (3.12)	15.9 (0.625)	4	14.3 (0.56)	49.2 (1.94)	17.5 (0.688)	55.6 (2.19)	34.5 (1.36)	50.8 (2)
32 (1 1/4")	117.5 (4.63)	88.9 (3.5)	15.9 (0.625)	4	15.9 (0.63)	58.7 (2.31)	20.6 (0.811)	57.1 (2.25)	43.2 (1.7)	63.5 (2.5)
40 (1 1/2")	127 (5)	98.4 (3.87)	15.9 (0.625)	4	17.5 (0.69)	65.1 (2.56)	22.2 (0.874)	61.9 (2.44)	49.5 (1.95)	73 (2.88)
50 (2")	152.4 (6)	120.6 (4.75)	19 (0.748)	4	19 (0.75)	77.8 (3.06)	25.4 (1)	63.5 (2.5)	62 (2.44)	92.1 (3.63)
65 (2 1/2")	177.8 (7)	139.7 (5.5)	19 (0.748)	4	22.2 (0.88)	90.5 (3.56)	28.6 (1.125)	69.8 (2.75)	74.7 (2.94)	104.8 (4.13)
80 (3")	190.5 (7.5)	152.4 (6)	19 (0.748)	4	23.8 (0.94)	107.9 (4.25)	30.2 (1.189)	69.8 (2.75)	90.7 (3.57)	127 (5)
100 (4")	228.6 (9)	190.5 (7.5)	19 (0.748)	8	23.8 (0.94)	134.9 (5.31)	33.3 (1.311)	76.2 (3)	116.1 (4.57)	157.2 (6.19)
125 (5")	254 (9)	215.9 (8.5)	22.2 (0.87)	8	23.8 (0.94)	163.5 (6.44)	36.5 (1.437)	88.9 (3.5)	143.8 (5.66)	185.7 (7.31)
150 (6")	279.4 (11)	241.3 (9.5)	22.2 (0.87)	8	25.4 (1)	192.1 (7.56)	39.7 (1.562)	88.9 (3.5)	170.7 (6.72)	215.9 (8.5)
200 (8")	342.9 (13.5)	298.4 (11.75)	22.2 (0.87)	8	28.6 (1.13)	246.1 (9.69)	44.4 (1.748)	101.6 (4)	221.5 (8.72)	269.9 (10.63)
250 (10")	406.4 (16)	361.9 (14.25)	25.4 (1)	12	30.2 (1.19)	304.8 (12)	49.2 (1.937)	101.6 (4)	276.3 (10.87)	323.8 (12.75)
300 (12")	482.6 (19)	431.8 (17)	25.4 (1)	12	31.8 (1.25)	365.1 (14.38)	55.6 (2.189)	114.3 (4.5)	327.1 (12.877)	381 (15)
350 (14")	533.4 (21)	476.2 (17)	28.6 (1.126)	12	34.9 (1.38)	400 (15.75)	57.1 (2.248)	127 (5)	359.1 (14.13)	412.7 (16.25)
400 (16")	596.9 (23.5)	539.7 (21.24)	28.6 (1.126)	16	36.5 (1.44)	457.2 (18)	63.5 (2.5)	127 (5)	410.5 (16.16)	469.9 (18.5)
450 (18")	635 (25)	577.8 (22.74)	31.7 (1.248)	16	39.7 (1.56)	504.8 (19.88)	68.3 (2.689)	139.7 (5.5)	461.8 (18.18)	533.4 (21)
500 (20")	698.5 (27.5)	635 (25)	31.7 (1.248)	20	42.9 (1.69)	558.8 (22)	73 (2.87)	144.5 (5.69)	513.1 (20.2)	584.2 (23)
600 (24")	812.8 (32)	749.3 (29.5)	34.9 (1.374)	20	47.6 (1.88)	663.6 (26.13)	82.5 (3.24)	152.4 (6)	615.9 (24.24)	692.1 (27.25)

Nominal pipe size MM (INCH)	Item No.	Item No.	Item No.
	SLIP ON FLANGE	WELDNECK FLANGE	BLIND FLANGE
15 (1/2")	FVT15801*	FVT15890*	FVT158025*
20 (3/4")	FVT15802*	FVT15891*	FVT158026*
25 (1")	FVT15803*	FVT15892*	FVT158027*
32 (1 1/4")	FVT15804*	FVT15893*	FVT158028*
40 (1 1/2")	FVT15805*	FVT15894*	FVT158029*
50 (2")	FVT15806*	FVT15895*	FVT158030*
65 (2 1/2")	FVT15807*	FVT15896*	FVT158031*
80 (3")	FVT15808*	FVT15897*	FVT158032*
100 (4")	FVT15809*	FVT15898*	FVT158033*
125 (5")	FVT158010*	FVT15899*	FVT158034*
150 (6")	FVT158011*	FVT158100*	FVT158035*
200 (8")	FVT158012*	FVT158101*	FVT158036*
250 (10")	FVT158013*	FVT158102*	FVT158037*
300 (12")	FVT158014*	FVT158103*	FVT158038*
350 (14")	FVT158015*	FVT158104*	FVT158039*
400 (16")	FVT158016*	FVT158105*	FVT158040*
450 (18")	FVT158017*	FVT158106*	FVT158041*
500 (20")	FVT158018*	FVT158107*	FVT158042*
600 (24")	FVT158019*	FVT158108*	FVT158043*

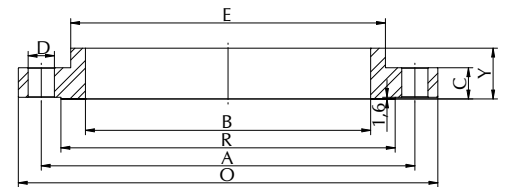
ANSI Flanges of class 300 as per ANSI - B16.5



SLIP ON FLANGE



WELDNECK FLANGE



BLIND FLANGE

Nominal pipe size MM (INCH)	Flange O/D Ø O	Bolt circle Ø A	Bolts hole size Ø D	No. of holes	Thk. of Flange C	Hub. dia Ø E	Hub length		Bore Ø S/O&S/ W B	R/F Ø R
							S/O&S/W Y	W/N Y		
15 (1/2")	95.2 (3.7)	66.7 (2.625)	15.9 (0.625)	4	14.3 (0.562)	38.1 (1.5)	22.2 (0.874)	52.4 (2.06)	22.3 (0.88)	34.9 (1.38)
20 (3/4")	117.5 (4.625)	82.5 (3.248)	19 (0.748)	4	15.9 (0.625)	47.6 (1.874)	25.4 (1)	57.1 (2.248)	27.7 (1.09)	42.9 (1.69)
25 (1")	123.8 (4.87)	88.9 (3.5)	19 (0.748)	4	17.5 (0.688)	54 (2.125)	27 (1.06)	61.9 (2.437)	34.5 (1.36)	50.8 (2)
32 (1 1/4")	133.3 (5.24)	98.4 (3.874)	19 (0.748)	4	19 (0.748)	63.5 (2.5)	27 (1.06)	65.1 (2.562)	43.2 (1.7)	63.5 (2.5)
40 (1 1/2")	155.6 (6.125)	114.3 (4.5)	22.2 (0.625)	4	20.6 (0.811)	69.8 (2.748)	30.2 (1.188)	68.3 (2.688)	49.5 (1.95)	73 (2.88)
50 (2")	165.1 (6.5)	127 (5)	19 (0.748)	8	22.2 (0.874)	84.1 (3.311)	33.3 (1.311)	69.8 (2.748)	62 (2.44)	92.1 (3.63)
65 (2 1/2")	190.5 (7.5)	149.2 (5.874)	22.2 (0.748)	8	25.4 (1)	100 (4)	38.1 (1.5)	76.2 (3)	74.7 (2.94)	104.8 (4.13)
80 (3")	209.5 (8.248)	168.3 (6.625)	22.2 (0.874)	8	28.6 (1.125)	117.5 (4.625)	42.9 (1.688)	79.4 (3.125)	90.7 (3.57)	127 (5)
100 (4")	254 (10)	200 (7.874)	22.2 (0.874)	8	31.8 (1.251)	146 (5.748)	47.6 (1.87)	85.7 (3.37)	116.1 (4.57)	157.2 (6.19)
125 (5")	279.4 (11)	234.9 (9.248)	22.2 (0.874)	8	34.9 (1.374)	177.8 (7)	50.8 (2)	98.4 (3.87)	143.8 (5.66)	185.7 (7.31)
150 (6")	317.5 (12.5)	269.9 (10.62)	22.2 (0.874)	12	36.5 (1.43)	206.4 (8.125)	52.4 (2.062)	98.4 (3.87)	170.7 (6.72)	215.9 (8.5)
200 (8")	381 (15)	330.2 (13)	25.4 (1)	12	41.3 (1.625)	260.3 (10.24)	61.9 (2.437)	111.1 (4.37)	221.5 (8.72)	269.9 (10.63)
250 (10")	444.5 (17.5)	387.3 (15.25)	28.6 (1.125)	16	47.6 (1.87)	320.7 (12.62)	66.7 (2.625)	117.5 (4.625)	276.3 (10.87)	323.8 (12.75)
300 (12")	520.7 (20.5)	450.8 (17.74)	31.7 (1.248)	16	50.8 (2)	374.6 (14.74)	73 (2.874)	130.2 (5.125)	327.1 (12.877)	381 (15)
350 (14")	584.2 (23)	514.3 (20.24)	31.7 (1.248)	20	54 (2.125)	425.4 (16.74)	76.2 (3)	142.9 (5.625)	359.1 (14.13)	412.7 (16.25)
400 (16")	647.7 (25.5)	571.5 (21.24)	34.9 (1.374)	20	57.2 (2.25)	482.6 (19)	82.5 (3.248)	146 (5.748)	410.5 (16.16)	469.9 (18.5)
450 (18")	711.2 (28)	628.5 (24.74)	34.9 (1.374)	24	60.3 (2.374)	533.4 (21)	88.9 (3.5)	158.7 (6.248)	461.8 (18.18)	533.4 (21)
500 (20")	774.7 (30.5)	685.8 (25)	34.9 (1.374)	24	63.5 (2.5)	587.4 (231.1)	95.2 (3.74)	161.9 (6.374)	513.1 (20.2)	584.2 (23)
600 (24")	914.4 (36)	812.8 (32)	41.3 (1.625)	24	69.8 (2.736)	701.7 (27.62)	106.4 (1.889)	188.3 (7.413)	615.9 (24.24)	692.1 (27.25)

Nominal pipe size MM (INCH)	Item No.	Item No.	Item No.
	SLIP ON FLANGE	WELDNECK FLANGE	BLIND FLANGE
15 (1/2")	FVT15870*	FVT15850*	FVT158110*
20 (3/4")	FVT15871*	FVT15851*	FVT158111*
25 (1")	FVT15872*	FVT15852*	FVT158112*
32 (1 1/4")	FVT15873*	FVT15853*	FVT158113*
40 (1 1/2")	FVT15874*	FVT15854*	FVT158114*
50 (2")	FVT15875*	FVT15855*	FVT158115*
65 (2 1/2")	FVT15876*	FVT15856*	FVT158116*
80 (3")	FVT15877*	FVT15857*	FVT158117*
100 (4")	FVT15878*	FVT15858*	FVT158118*
125 (5")	FVT15879*	FVT15859*	FVT158119*
150 (6")	FVT15880*	FVT15860*	FVT158120*
200 (8")	FVT15881*	FVT15861*	FVT158121*
250 (10")	FVT15882*	FVT15862*	FVT158122*
300 (12")	FVT15883*	FVT15863*	FVT158123*
350 (14")	FVT15884*	FVT15864*	FVT158124*
400 (16")	FVT15885*	FVT15865*	FVT158125*
450 (18")	FVT15886*	FVT15866*	FVT158126*
500 (20")	FVT15887*	FVT15867*	FVT158127*
600 (24")	FVT15888*	FVT15868*	FVT158128*



Flyvacuum Technologies Pvt. Ltd.

No.338, 9th Cross, 4th Phase

Peenya, Bangalore 560 058, Karnataka, INDIA

Tel.: +91 80 4852 1441

email: marketing@flyvacuum.com

www.flyvacuum.com