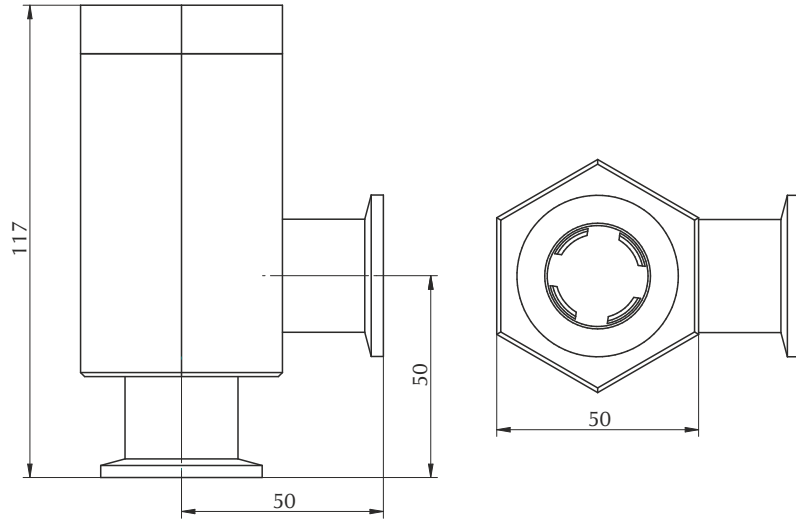


PRESSURE RELIEF VALVE

Main applications

The PRV valves are designed for applications requiring an adjustable pressure relief valve to limit system pressure to a desired maximum.



ORDER CODE-FVT916PRV - DN16

ORDER CODE-FVT925PRV - DN25

Features

High Vacuum Compatible.
Reseats once pressure is relieved.
Flow rate max. 200 l/min.
Stainless steel Housing.

Range : Pressure relief @ 3-24PSIG ($\pm 15\%$).
Material : 304 Stainless steel body, spring & stem with Viton sealed seat.
Leak Rate : Leak tight to 2×10^{-8} std. cc/sec of Helium.
End Mounting : DN 16/25 ISO-KF

Pressure Adjustment

Pressure can be adjusted by loosening a jam nut and turning an adjustment screw. Turning clockwise increases pressure and turning counter clockwise decreases pressure. The maximum pressure that can be attained by turning the adjusting screw is set at the factory to the value specified in the model code.



Flyvacuum Technologies Pvt. Ltd.

No.338, 9th Cross, 4th Phase

Peenya, Bangalore 560 058, Karnataka, INDIA

Tel.: +91 80 4852 1441

email: marketing@flyvacuum.com

www.flyvacuum.com